

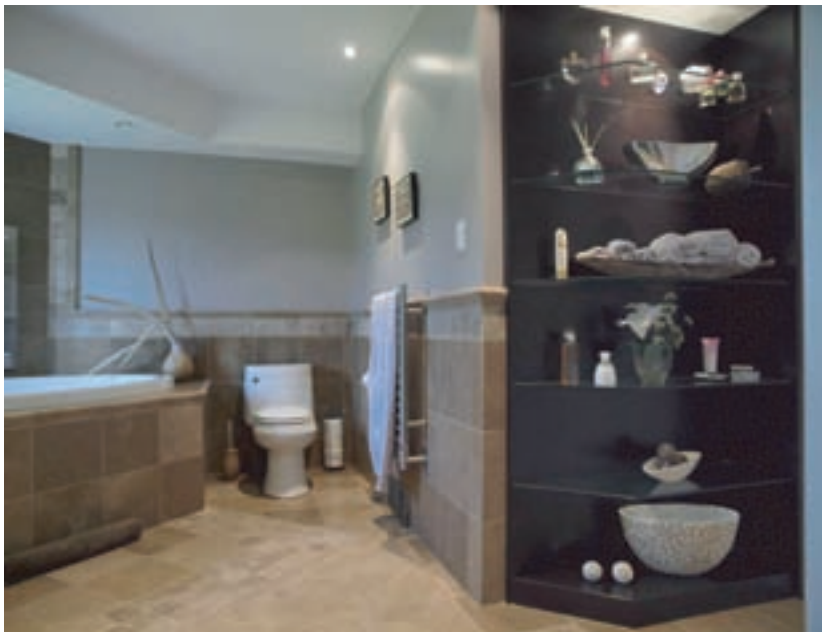


Renomark

RENOVATION AWARDS

OSWALD CONSTRUCTION LTD.

Category 3: Bathroom



- The new walk-in closet contains shelving and rods on three walls easily fulfilling all storage needs.
- A gas fireplace set cross corner into the wall glows above the large oversize soaker tub.
- A new window set close to tub deck height allows a tub user to gaze outdoors while bathing.
- All the cabinets/millwork are constructed from dark stained maple veneer panels.
- The vanity is topped with a Travertine marble counter top with an oversize cast iron drop in sink installed.
- Four different pot light circuits allow for any arrangement of lighting the client may wish for.
- The floor is heated by electric radiant heat cables and the towels warm themselves on an electrically heated towel rack.

VALUE OF PROJECT:
\$50,000.00